



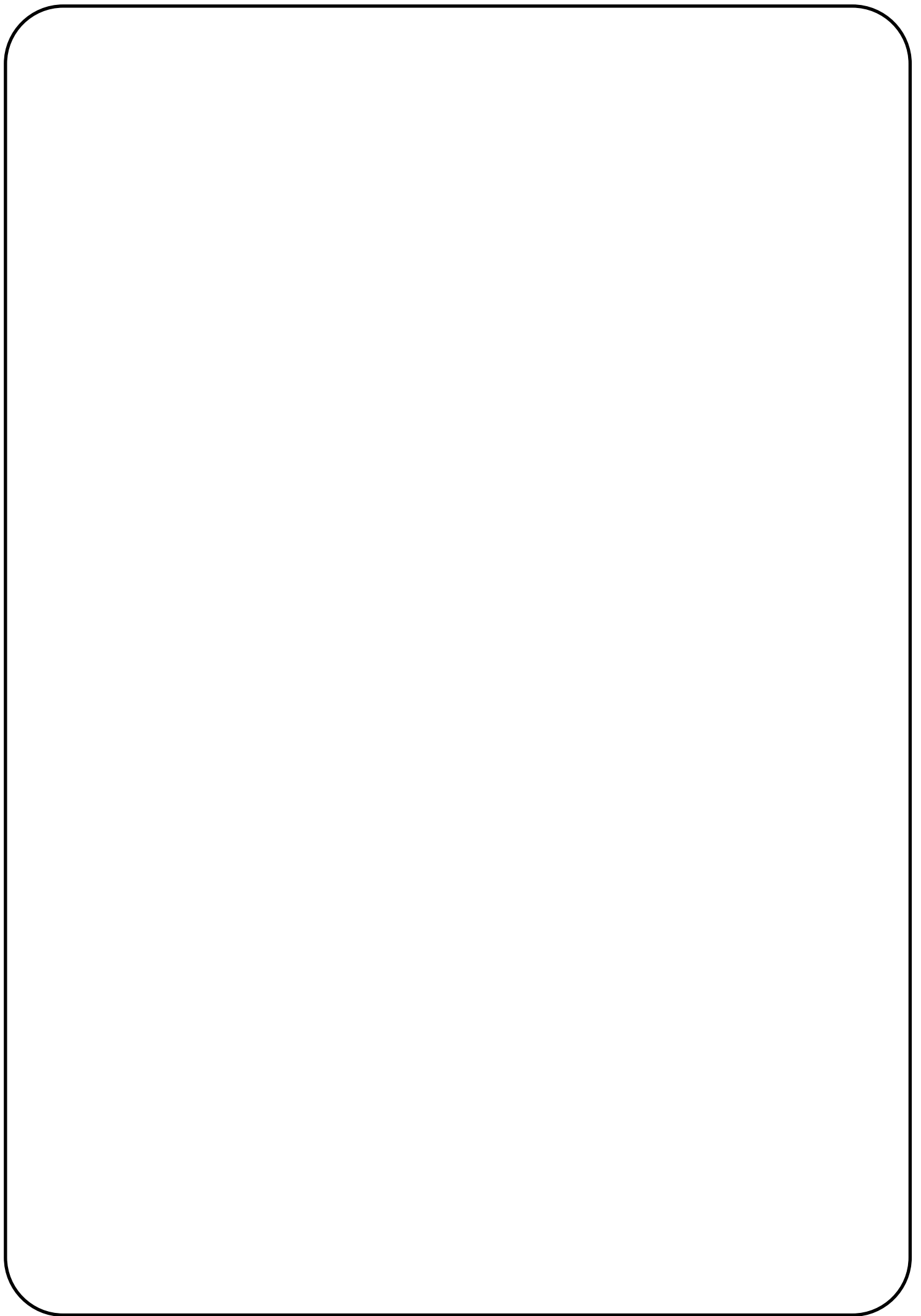
**AVIDHIFI**

# **REFERENCE THREE**

**LOUDSPEAKER SYSTEM**



**USER MANUAL**



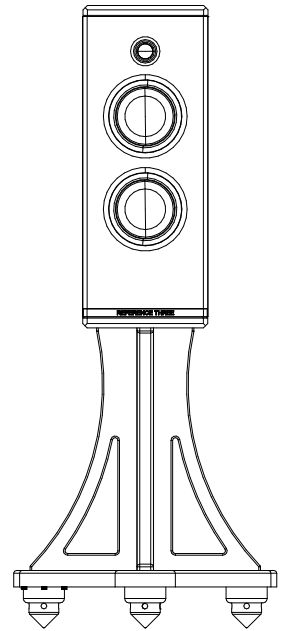
## Table of Contents

<b>Topic</b>	<b>Page</b>
<b>Welcome</b>	<b>3</b>
<b>Caution</b>	<b>3</b>
<b>Key Reference Two features</b>	<b>4</b>
<b>Placement</b>	<b>5</b>
<b>Unpacking</b>	<b>5</b>
<b>Spike Adjustments</b>	<b>6</b>
<b>Connections</b>	<b>7</b>
<b>Cable Choice</b>	<b>7</b>
<b>Specifications</b>	<b>8</b>
<b>Warranty</b>	<b>9</b>

## **AVID Reference Three**

*Congratulations on purchasing your AVID Reference Three. Using the highest quality materials during assembly and built to the highest industry standards, your Reference Three loudspeaker should provide you with many years of trouble-free enjoyment.*

*Please read this manual carefully to ensure you understand all the features and operating functions available.*



### **Caution**

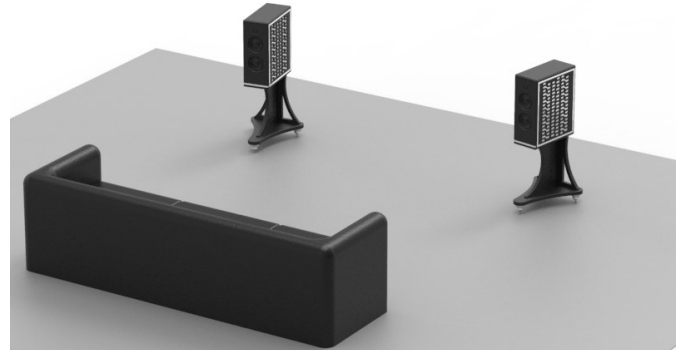
- **These units are extremely heavy, and unless great care is taken when moving them, serious injury may result.**
- **Please avoid touching any of the loudspeaker drive units—they are extremely fragile, and very easily damaged.**
- **Please do not attempt to disassemble your loudspeaker . The individual panels are very heavy and could potentially cause serious injury**
- **Only clean your Reference loudspeaker with a dry micro-fibre cloth—the drive units do not need to be cleaned.**
- **Take care to ensure the loudspeaker is not exposed to water or other liquids.**
- **If the unit has been kept in a cold location for some time, it will take several hours to acclimatise to the new environment—during this time, condensation may form on the cabinet—simply wipe this with a soft cloth. The speakers will only perform to their optimum when they are at room temperature.**

## KEY REFERENCE THREE FEATURES

- AVID Tuned Mass Damping System.
- Highly stable, ultra-rigid Aluminium cabinet construction throughout.
- 2 x 6" L.F. drivers with 3" voice coils.
- 1 x 28mm HF soft-dome driver.
- Precision Drive units utilising:
  - Uniflow™ Aluminium diecast chassis.
  - Hexatech™ Aluminium voice coil.
  - Neodymium flat pancake magnet (H.F.)
  - Hybrid™ Neodymium/Ferrite magnet system (M.F.)
  - High flux double Ferrite magnet system (L.F.)
  - Copper sleeve Neolin Motors.
  - Titanium voice coil formers.
  - External Voice Coil (EVC)™ Technology.
- 3 driver, 2.5-way passive design.
- High quality crossover with custom designed and wound inductors.
- Bi-amp/Bi-wire connectivity using heavy-duty connectors.
- Supplied with adjustable polished stainless steel spikes.

## PLACEMENT

- The Reference Three is a medium-sized design, intended to be used in a typical domestic listening environment.
- Experimentation with both the location of the loudspeakers and your seating position is recommended.
- The Reference Three is a heavy loudspeaker. Using the spikes will place a lot of pressure on the floor—please make sure the floor is suitably resilient.
- Ideal positioning is room dependent, but typically they will perform best when placed symmetrically in a near-rectangular room playing across the shorter distance
- Aim both loudspeakers slightly towards the listening position
- Avoid having the speakers too close to the rear (>500mm/20”) and the side walls (>750mm/30”) - but please experiment!



## UNPACKING

The Reference Three speakers are delivered in four boxes. It is recommended that you open the stand boxes first and locate them near their final positions, and then unpack the speakers, and mount them directly on the stands—the finished assembly will be very heavy, and difficult to move.

1. Unpack the speaker stand, carefully lift the stands to their final position
2. At least two people will be required to lift the speakers
3. Lift the speaker onto the stand—**DO NOT PLACE YOUR FINGERS UNDERNEATH THE LOUDSPEAKER** - there is a serious risk of trapping them between the stand and the loudspeaker.
4. The top of the stand fits into a recess in the bottom of the stand—be careful to make sure you align the two parts so that they engage correctly.
5. Finally using the supplied Allen key, screw in the six 25mm countersunk bolts into the stand—make sure these are all tightened securely.

## SPIKE ADJUSTMENT

The three stainless steel spikes are adjustable, allowing you to ensure the loudspeakers are level regardless of what surface they are placed on.

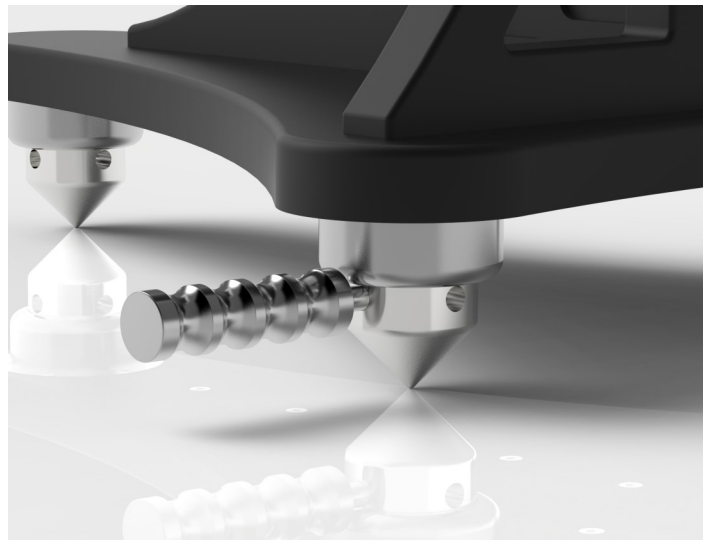
Care must be taken whenever moving your loudspeakers—always ensure you have enough help at hand to ensure that you are completely safe, and do not attempt anything that may endanger you, or others around you.

Due to the weight of the loudspeakers, we provide a hand wrench to make these adjustments easier.

Simply insert the wrench into one of the holes in the circumference of the foot, and turn the spike clockwise to raise the loudspeaker and anti-clockwise to lower the speaker. You will find it easier to complete a full revolution of a spike by removing the wrench, and inserting it into a more accessible hole. Adjust all three spikes to ensure both loudspeakers are level.

The stands are supplied set to their lowest setting. Raise the speaker the minimum amount needed to level the speaker—excessive height will only increase the likelihood of instability.

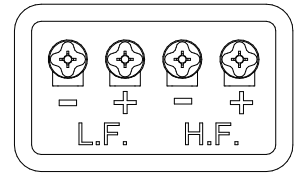
Wrench



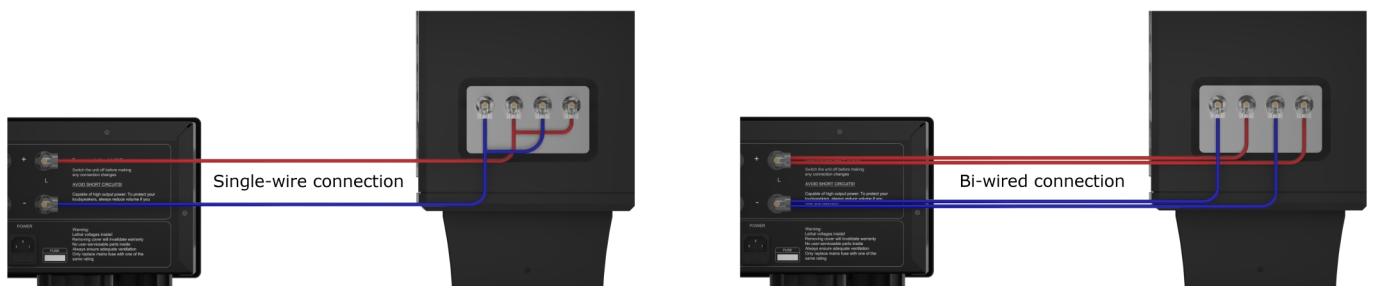
## CONNECTIONS

The Reference Three allows for either bi-wiring or bi-amping. This means that you need a connection from you amplifier to each terminal on the back of the loudspeaker.

We recommend using a bi-wired configuration whenever possible



- Either Banana/4mm or Spade connectors may be used.
- If you would require to use a conventional, single wired connection, you will need to create a short set of 'jumper' connections that join the L.F. negative to H.F. negative and the L.F. positive to the H.F. positive.
- The banana/4mm connectors from the amplifier simply need to be pushed into the central hole of each connector.
- To connect a spade connector, simply loosen each connector, by rotating the clear cap anti-clockwise, then insert the spade in the slot, from below—no more than hand tightening is required. Excess force could damage the connector.



## CABLE CHOICE

Whilst AVID do manufacture a range of loudspeaker cables, designed to match the performance of our loudspeakers, our loudspeakers will function with most cable types. When choosing a cable, it is best to remember the following:

- These speakers are capable of handling very high powers. To attain these powers a low-resistance connection is necessary—a cable with a large cross-sectional area is highly recommended.
- To further reduce the DC resistance of the loudspeaker cable, it is recommended that cable lengths should be as short as possible, and of equal length.
- The DC resistance of connections at either end of the cable is equally important—ensure all connections are clean and secure.



## Specification

<b>HF:</b>	1 x 28mm (Titanium voice coil former)
<b>MF:</b>	2 x 160mm (75mm Titanium voice coil former)
<b>Frequency Response:</b>	35Hz - 22kHz +/-3dB
<b>Sensitivity:</b>	88dB 1W@1m
<b>Recommended Power:</b>	40 - 400W
<b>Impedance:</b>	6 Ohm
<b>Crossover Topology:</b>	2.5 way, 2nd Order
<b>Cabinet Construction:</b>	Aluminium Plate. All internal volumes sealed with O-Ring gaskets
<b>Dimensions (HxWxD)</b>	
<b>Cabinet:</b>	590 x 230 x 525 (mm) 23.3 x 9.1 x 20.7 (in)
<b>inc. plinth and spikes:</b>	1140 x 460 x 605 (mm) 44.9 x 18.1 x 23.9 (in)
<b>Net weight:</b>	100 KG each inc. Stand
<b>Packaging (HxWxD):</b>	485 x 675 x 745 (mm)      Speaker 19.1 x 26.6 x 29.5 (in) 815 x 620 x 745 (mm)      Stand 32.1 x 24.5 x 29.5 (in) Product supplied in Four cartons
<b>Shipping weight:</b>	296 KG per pair

Specifications are subject to change

## Warranty Statement UK Residents

**AVID HIFI** Limited products are warranted against defects in materials and workmanship for a period of two years from the original date of purchase, or no later than three years from the date of shipment to an authorized **AVID** agent, whichever comes first, extending to five years subject to the product owner having submitted the Registration form ([www.avidhifi.com](http://www.avidhifi.com)). Also the following conditions being observed.

- The product must have been purchased through an authorized **AVID** dealer
- By default, the warranty is in favour of the original purchaser only, however warranties are transferable providing the new owner completes the online product registration form. In this case, warranty obligation will pass from dealer to manufacturer.
- During the warranty period, **AVID** will repair, or replace any defects due to material or workmanship, without charge for parts or labour.
- Should product need to be returned, a written description of the defect and a photocopy of the original purchase receipt must accompany it. Receipts must show the model, serial number, date of purchase, name and address of purchaser and authorized dealer and the price paid.
- Returned product must be packed in the original packing and returned to **AVID** or original dealer by the customer at his/her expense. **AVID** will pay return freight of its choice.
- The warranty is void if the product has been used or handled other than in accordance with the instruction manual supplied, abused or misused, damage by accident or neglect or in being transported, or the defect is due to the product being repaired or tampered with by anyone other than **AVID** or an dealer with prior authorization.
- The warranty is void if the product serial number has been removed, altered or made illegible.
- The warranty is void if the product has been taken out of the country of purchase.
- **AVID** shall not be held liable for incidental or consequential damages of any kind arising from the sale or use of its products.
- The warranty applies to ex-demonstration product, using manufacture date as purchase date.
- Where the product is sold under a consumer transaction (as defined by the Sale of Goods Act 1979) the statutory rights of the purchaser are not affected by this warranty.
- Products are sold on the basis of specifications applicable at the time of sale. **AVID** shall have no obligation to modify or to update products once sold.

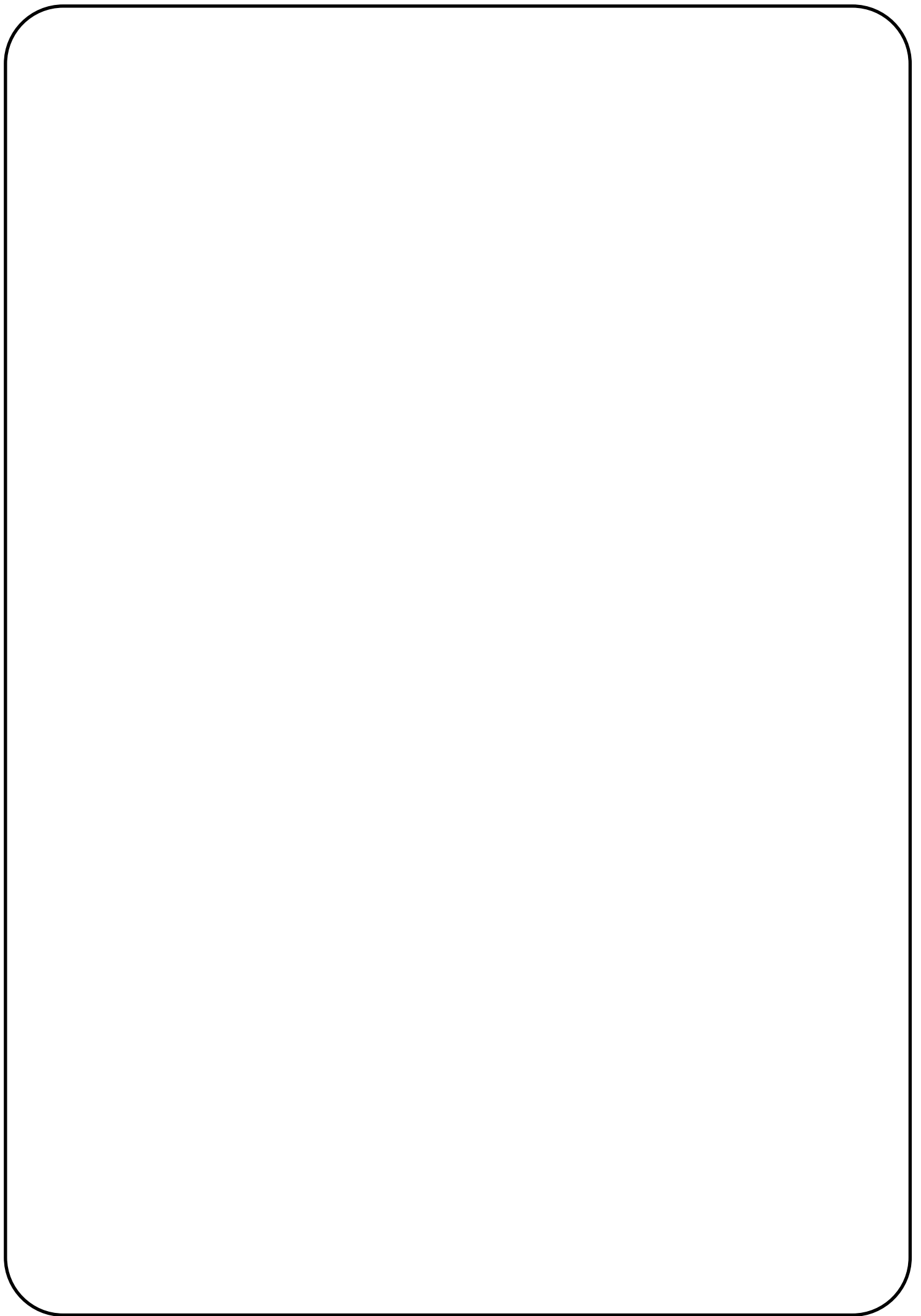
## Outside UK

**AVID** has formal distribution in many countries throughout the world. In each country the **AVID** importer has contractually accepted the responsibility for the product warranty. Warranty should normally be obtained from the importing agent or distributor from whom you obtained your product. In the unlikely event of service required beyond the capability of the importer, **AVID** will, of course, back up the warranty.

- Where product has been either supplied directly or there is no current distributor, **AVID** accepts responsibility for the warranty period. Returned product must be packed in the original packing and returned to **AVID** by the customer at his/her expense. **AVID** will pay return freight of its choice. The warranty is only valid in the country of purchase.
- Products outside their original destination requires that units with remaining warranty be returned to the country of purchase for the warranty to be valid. Customer is responsible for freight both ways and all associated import and export charges.
- Foreign distributors are not required to provide warranty service, repair or change AC mains voltage on units that they did not originally import and sell.
- Foreign distributors may at their discretion offer service for a fee.

MISCELLANEOUS: ANY IMPLIED WARRANTIES RELATING TO THE ABOVE PRODUCT SHALL BE LIMITED TO THE DURATION OF THIS WARRANTY. THE WARRANTY DOES NOT EXTEND TO ANY INCIDENTAL OR CONSEQUENTIAL COSTS OR DAMAGES TO THE PURCHASER.

WARRANTOR. Inquiries regarding the Limited Warranty may be sent to the following address:  
**AVID HIFI** Limited. Bicton Industrial Park, Kimbolton, Huntingdon. PE28 0LW ENGLAND





# AVIDHIFI



## **AVID HIFI Ltd**

Bicton Industrial Park,  
Kimbolton, Huntingdon,  
Cambridgeshire. PE28 0LW  
ENGLAND

Tel: +44(0)1480 869 900 — Website: [www.avidhifi.com](http://www.avidhifi.com) - Email: [info@avidhifi.co.uk](mailto:info@avidhifi.co.uk)

Company Registered No: 5435528 — VAT Registration No: GB 694 9858 48 — Directors: C. Mas & S.J. Mas